

THE MAZDA FLEET RANGE GUIDE



WHY MAZDA

[I am a company car driver](#)

With award-winning technology, high specifications and advanced safety features, Mazda offers unrivalled company car driving pleasure. With a combination of competitive P11D values, CO₂ and low BIK, Mazda is the perfect choice for your new company car.

[I am a Fleet Decision Maker](#)

Choosing the right cars for your fleet can be taxing - our team of Regional Corporate Sales Managers are on hand to assist with all your Mazda Fleet queries. You'll be delighted you got in touch.

[I am a Business Owner / Business Decision Maker](#)

The benefits of choosing Mazda are numerous - our value proposition extends to class leading whole life costs, strong residual values and excellent reliability. Whether you decide to buy outright or lease your next car, we make the process simple and cost effective - leaving you to focus on your business.

[Contact Us](#)



CLICK TO SELECT



MAZDA2 HYBRID



MAZDA3 HATCHBACK



MAZDA3 SALOON



MAZDA CX-30



MAZDA CX-5



MAZDA CX-60



MAZDA CX-80



MAZDA MX-30



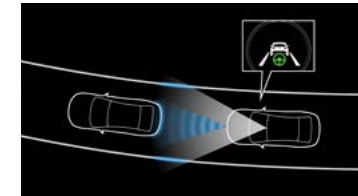
ROTARY ELECTRIC
VEHICLE



SKYACTIV ENGINES
AND HYBRID
TECHNOLOGY



SKYACTIV VEHICLE
ARCHITECTURE



ADVANCED
TECHNOLOGY

MAZDA2 HYBRID

OUR FIRST SELF-CHARGING HYBRID



MAZDA2 HYBRID

Mazda2 Hybrid brings self-charging full hybrid technology to the Mazda range. Advanced hybrid technology provides great fuel economy and low emissions, along with the ability to drive in EV (Electric Vehicle mode) at low speeds, which means that no fuel is used, there are no CO₂ emissions and it has near silent operation.

Responsive and fun to drive, all Mazda2 Hybrid models are powered by a 1.5i petrol engine mated to an automatic transmission. Combined CO₂ emissions are as low as 87g/km and combined MPG of up to 74.3mpg, making Mazda2 Hybrid the ideal choice for fleet operators looking to control costs and reduce emissions.



MAZDA2 HYBRID GRADE HIGHLIGHTS*

	CENTRE-LINE	EXCLUSIVE-LINE in addition to Centre-Line, Exclusive-Line adds:	HOMURA in addition to Exclusive-Line, Homura adds:	HOMURA PLUS in addition to Homura, Homura Plus adds:
EXTERIOR	<ul style="list-style-type: none"> • 15" Silver alloy wheels • Gloss Black electrically-adjustable, heated door mirrors • Automatic High Beam Headlights • Dusk-sensing headlights • LED daytime running lights • Reversing camera • LED rear combination lights with halogen indicators • Front rain-sensing wipers 	<ul style="list-style-type: none"> • 16" Silver alloy wheels • Auto power-folding door mirrors • Front and rear Parking sensors 	<ul style="list-style-type: none"> • 17" Black alloy wheels • LED headlights and LED daytime running lights • LED front fog lights • Rear Privacy Glass • LED rear combination lights with LED indicators 	<ul style="list-style-type: none"> • Panoramic glass roof
INTERIOR	<ul style="list-style-type: none"> • Electronic Parking Brake with auto-hold and auto-disengage function • Analogue speedometer and hybrid system indicator with multi-information display • Black fabric seat trim 		<ul style="list-style-type: none"> • 7" Digital customisable speedometer and hybrid system indicator • Auto-dimming rear-view mirror • Front sport seats with driver and front passenger's seat, manual slide, recline and height adjustment • Black fabric with synthetic leather seat trim 	<ul style="list-style-type: none"> • 12.3" Digital customisable speedometer and hybrid system indicator
INFOTAINMENT	<ul style="list-style-type: none"> • DAB Radio with 6 speakers and USB-C input • 9" Colour screen centre display • Integrated Bluetooth® • Wireless Apple CarPlay® & Android Auto™ 		<ul style="list-style-type: none"> • Qi Wireless charging 	<ul style="list-style-type: none"> • 6 speaker audio system with 10.5" Colour screen centre display • Satellite Navigation System • Voice recognition
COMFORT AND CONVENIENCE	<ul style="list-style-type: none"> • Adjustable Speed Limiter • Climate-controlled air-conditioning • Dynamic Radar Cruise Control • Electric windows, front and rear • EV drive mode 	<ul style="list-style-type: none"> • Push button start / stop 	<ul style="list-style-type: none"> • Dual zone climate-controlled air-conditioning • Interior ambient lighting 	<ul style="list-style-type: none"> • Windscreen projected head-up display
SAFETY AND SECURITY	<ul style="list-style-type: none"> • e-Call with GPS • Hill-start assist control • Lane Tracing Assist • Pre-Collision System – Front enhanced with emergency steering assist • Remote central locking with deadlocking • Road Sign Assist (RSA) 	<ul style="list-style-type: none"> • Blind Spot Monitoring (BSM) with parking support brake function (rear-crossing) • Smart keyless entry 	<ul style="list-style-type: none"> • Rear Parking Support Brake function (static objects) • Rear Cross Traffic Alert (Auto Braking) 	

*Specification is not exhaustive. Please see www.mazda.co.uk for further information or download a Price & Specification Guide.

MAZDA2 HYBRID PRICING – PETROL



MAZDA2 HYBRID PETROL HYBRID	P11D VALUE	CO ₂ EMISSIONS (G/KM) ¹	BIK TAX (20/40%) ²	0-62MPH (SECS)
116ps Centre-Line	£24,255	87	£93/£186	9.7
116ps Exclusive-Line	£25,470	92	£102/£204	9.7
116ps Homura	£27,370	97	£114/£228	9.7
116ps Homura Plus	£29,320	98	£122/£244	9.7

EXTERIOR COLOURS	BASIC PRICE	VAT	RRP~
Lunar White	£0	£0	£0
Stormy Silver / Lead Grey / Glass Blue / Opera Black	£500.00	£100.00	£600
Northern White / Formal Red	£708.33	£141.67	£850

¹ Figures shown are for comparability purposes; only compare CO₂ figures with other cars tested to the same technical procedures. These figures may not reflect real life driving results, which will depend upon a number of factors including the accessories fitted (post-registration), variations in weather, driving styles and vehicle load. All figures quoted are derived from the latest WLTP test cycle. ² BIK tax figures quoted per month in 2025/26 (except Scotland).

~Factory fitted option prices quoted are recommended retail prices and are inclusive of VAT at 20%.

Pricing and specification are subject to change. Please speak with your local dealer for latest pricing information.

MAZDA3 HATCHBACK

AWARD WINNING DESIGN, EXHILARATING DRIVE



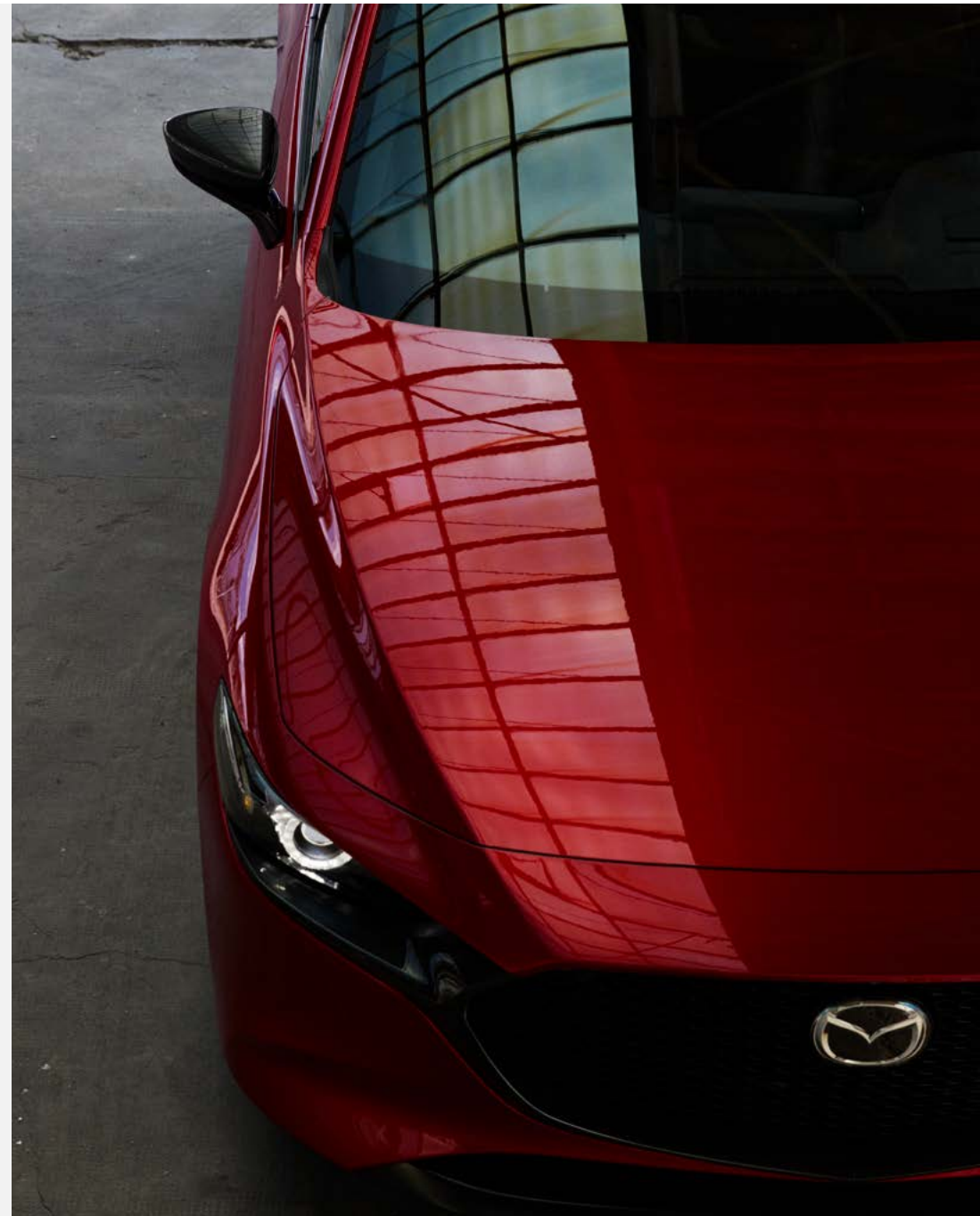
MAZDA3 HATCHBACK MHEV

The Mazda3 is centred around you, the driver. Ground-breaking Mazda e-Skyactiv X petrol engine technology delivers CO₂ emissions as low as 123g/km and combined fuel consumption up to 51.4mpg for a refined, efficient drive and exceptional environmental performance, making the Mazda3 an ideal choice.

Mazda3 also benefits from Mazda M Hybrid, an intelligent Mild Hybrid system which enables the Mazda3 to use less fuel without loss of driving pleasure.

With its powerful and sleek presence, the Mazda3 hatchback embraces the latest Kodo design language with a strong sporty appeal that stirs your senses even before you drive. The human centric cockpit and finest quality materials deliver the purest form of Jinba Ittai – a true connection between car and driver.

And thanks to Mazda's suite of i-Activsense safety technologies, you can enjoy the Mazda3 knowing that you and your passengers are safe and comfortable.



MAZDA3 HATCHBACK GRADE HIGHLIGHTS*

	PRIME-LINE	CENTRE-LINE in addition to Prime-Line, Centre-Line adds:	HOMURA in addition to Prime-Line, Homura adds:	EXCLUSIVE-LINE in addition to Centre-Line, Exclusive-Line adds:	TAKUMI in addition to Exclusive-Line, Takumi adds:
EXTERIOR	<ul style="list-style-type: none"> • 16" Silver alloy wheels • Body coloured electrically-adjustable, heated, auto power-folding door mirrors • Front grille in Gloss Black with dark metallic finish • Signature Wing in Gloss Black • Rear parking sensors • Reversing camera • Dusk-sensing headlights • LED daytime running lights • LED Headlights • Gloss Black roof spoiler 	<ul style="list-style-type: none"> • Auto-dimming driver door mirror • Front rain-sensing wipers • Front and rear parking sensors 	<ul style="list-style-type: none"> • 18" Black alloy wheels • B-Pillar garnish in Gloss Black • Black electrically-adjustable, heated, auto power-folding door mirrors • Rear privacy glass • Front rain-sensing wipers • Front and rear parking sensors • Power tilt and slide sunroof (e-Skyactiv X models only) 	<ul style="list-style-type: none"> • 18" Grey alloy wheels (e-Skyactiv G models only) • 18" Black alloy wheels (e-Skyactiv X models only) • B-Pillar garnish in Gloss Black • Adaptive LED Headlights • Signature front LED daytime running lights • Power tilt and slide sunroof (e-Skyactiv X models only) • Rear privacy glass 	<ul style="list-style-type: none"> • Door mirror tilt down function when reversing • 360° View Monitor (provides a birdseye view with front, rear and side mounted cameras)
INTERIOR	<ul style="list-style-type: none"> • Premium Dark Grey cloth seat trim • Colour 7" TFT instrument cluster display (provides speed, traffic signs and Mazda Radar Cruise Control information) • Electronic Parking Brake with auto-hold and auto-disengage function 	<ul style="list-style-type: none"> • Auto-dimming rear view mirror • 3-Stage heated front seats 	<ul style="list-style-type: none"> • Black cloth seat trim with Red stitching • Black interior colouration with Red stitching steering wheel, gearshift gaitor, dashboard panel, armrest • Auto-dimming rear-view mirror • Heated front seats 	<ul style="list-style-type: none"> • Frameless auto-dimming rear-view mirror • Steering wheel mounted paddle shift (Automatic Hatchback models only) 	<ul style="list-style-type: none"> • Black leather[†] seat trim • Driver seat power slide, recline, height, seat tilt and lumbar adjustment with head-up display and driver door mirror memory • Heated steering wheel
INFOTAINMENT	<ul style="list-style-type: none"> • Wireless Apple CarPlay® & Android Auto™ • Connected Services[^] • Integrated Bluetooth® • Mazda Connect multimedia system with 10.25" Colour centre display and Multimedia Commander and AM / FM / DAB radio, with 6 speakers and 2 x USB Type-C inputs • Amazon Alexa In-Car Voice Assistant • Mazda Navigation System with European mapping and 7-years free map updates 	<ul style="list-style-type: none"> • AM / FM / DAB, with 8 speakers and 2 x USB Type-C inputs • Qi Wireless charging for smartphones 	<ul style="list-style-type: none"> • AM / FM / DAB, with 8 speakers and 2 x USB Type-C inputs • Qi Wireless charging for smartphones 	<ul style="list-style-type: none"> • AM / FM / DAB radio featuring 12-Speaker Bose surround-sound system, with Bose CenterPoint, BassMatch and AudioPilot technology 	
COMFORT AND CONVENIENCE	<ul style="list-style-type: none"> • Air-conditioning • Electric windows • Mazda Radar Cruise Control • Windscreen projected colour Active Driving Display 	<ul style="list-style-type: none"> • Drive selection switch (Sport mode) (Automatic models only) • Dual-zone climate control air-conditioning • Mazda Radar Cruise Control (Automatic Transmission features Stop and Go) 	<ul style="list-style-type: none"> • Drive selection switch (Sport mode) (Automatic models only) • Dual-zone climate control air-conditioning • Mazda Radar Cruise Control (Automatic Transmission features Stop and Go) 		<ul style="list-style-type: none"> • Cruising and Traffic Support
SAFETY AND SECURITY	<ul style="list-style-type: none"> • Blind Spot Monitoring with Rear Cross Traffic Alert • Driver Attention Alert • e-Call with GPS • Intelligent Speed Assist • Lane-keep Assist System with Lane Departure Warning System • Smart Brake Support - Front • Remote central locking with deadlocking • Traffic Sign Recognition 	<ul style="list-style-type: none"> • Smart keyless entry 	<ul style="list-style-type: none"> • Smart keyless entry 		<ul style="list-style-type: none"> • Driver Monitoring • Front Cross Traffic Alert • Smart Brake Support - Rear • Smart Brake Support - Rear Crossing

*Specification is not exhaustive. Please see www.mazda.co.uk for further information or download a Price & Specification Guide.

[^]Connected Services is a subscription service and requires a compatible mobile device to download and sign-up to the MyMazda App. A 7-year complimentary period is included and commences from the date of first registration of the vehicle. Please contact your dealer or visit www.mazda.co.uk/my-mazda for further information.

[†]Leather refers to centre seat facing and side supports.

MAZDA3 HATCHBACK PRICING - PETROL



MAZDA3 HATCHBACK e-SKYACTIV G MHEV	P11D VALUE	CO ₂ EMISSIONS (G/KM) ¹	BIK TAX (20/40%) ²	0-62MPH (SECS)
140ps Prime-Line	£24,435	133	£130/£261	9.5
140ps Centre-Line	£25,535	133	£136/£272	9.5
140ps Homura	£26,035	135	£143/£286	9.5
140ps Homura Auto	£27,580	141	£156/£313	9.8
140ps Exclusive-Line	£27,235	135	£150/£300	9.5
140ps Exclusive-Line Auto	£28,780	141	£163/£326	9.8
140ps Takumi	£29,635	135	£163/£326	9.5
140ps Takumi Auto	£31,180	141	£177/£353	9.8

EXTERIOR COLOURS	BASIC PRICE	VAT	RRP~
Arctic White	£0	£0	£0
Snowflake White / Platinum Quartz / Polymetal Grey / Deep Crystal Blue / Jet Black / Ceramic White / Zircon Sand	£500.00	£100.00	£600
Machine Grey	£583.33	£116.67	£700
Soul Red Crystal	£708.33	£141.67	£850

¹ Figures shown are for comparability purposes; only compare CO₂ figures with other cars tested to the same technical procedures. These figures may not reflect real life driving results, which will depend upon a number of factors including the accessories fitted (post-registration), variations in weather, driving styles and vehicle load. All figures quoted are derived from the latest WLTP test cycle. ² BIK tax figures quoted per month in 2025/26 (except Scotland).

~Factory fitted option prices quoted are recommended retail prices and are inclusive of VAT at 20%.

Pricing and specification are subject to change. Please speak with your local dealer for latest pricing information.

MAZDA3 HATCHBACK PRICING - PETROL



MAZDA3 HATCHBACK e-SKYACTIV X MHEV	P11D VALUE	CO ₂ EMISSIONS (G/KM) ¹	BIK TAX (20/40%) ²	0-62MPH (SECS)
186ps Homura	£28,480	126	£147/£294	8.1
186ps Homura Auto	£29,980	138	£165/£330	8.5
186ps Exclusive-Line	£29,780	126	£154/£308	8.1
186ps Exclusive-Line Auto	£31,280	138	£172/£344	8.5
186ps Takumi	£32,180	126	£166/£333	8.1
186ps Takumi Auto	£33,680	138	£185/£370	8.5

EXTERIOR COLOURS	BASIC PRICE	VAT	RRP~
Arctic White	£0	£0	£0
Snowflake White / Platinum Quartz / Polymetal Grey / Deep Crystal Blue / Jet Black / Ceramic White / Zircon Sand	£500.00	£100.00	£600
Machine Grey	£583.33	£116.67	£700
Soul Red Crystal	£708.33	£141.67	£850

¹ Figures shown are for comparability purposes; only compare CO₂ figures with other cars tested to the same technical procedures. These figures may not reflect real life driving results, which will depend upon a number of factors including the accessories fitted (post-registration), variations in weather, driving styles and vehicle load. All figures quoted are derived from the latest WLTP test cycle. ²BIK tax figures quoted per month in 2025/26 (except Scotland).

~Factory fitted option prices quoted are recommended retail prices and are inclusive of VAT at 20%.

Pricing and specification are subject to change. Please speak with your local dealer for latest pricing information.

MAZDA3 SALOON
ELEGANT DESIGN, REFINED PERFORMANCE



MAZDA3 SALOON MHEV

The Mazda3 features ground breaking Mazda e-Skyactiv X petrol engine technology which delivers CO₂ emissions as low as 123g/km and combined fuel consumption up to 51.4mpg for a refined, efficient drive and exceptional environmental performance.

Also benefiting from Mazda M Hybrid, an intelligent Mild Hybrid system which enables the Mazda3 Saloon to use less fuel without loss of driving pleasure.

Created with a sleek, refined body, the Mazda3 Saloon embraces the latest Kodo design language with crisp, clean styling exuding pure sophistication inside and out. The human-centric cockpit and finest quality materials deliver the purest form of Jinba Ittai – a true connection between car and driver.

And thanks to Mazda's suite of i-Activsense safety technologies, you can enjoy the Mazda3 knowing that you and your passengers are safe and comfortable.



MAZDA3 SALOON GRADE HIGHLIGHTS*

EXCLUSIVE-LINE

EXTERIOR	<ul style="list-style-type: none">• 18" Bright alloy wheels• Body coloured electrically-adjustable, heated, auto power-folding door mirrors• Reversing camera• Dusk-sensing headlights• Adaptive LED Headlights• Signature front LED daytime running lights• Power tilt and slide sunroof• B-Pillar garnish in Gloss Black• Front grille in Gloss Black with bright finish Signature Wing
INTERIOR	<ul style="list-style-type: none">• Premium Dark Grey cloth seat trim with 3-stage heated seats• Colour 7" TFT instrument cluster display (provides speed, traffic signs and Mazda Radar Cruise Control information)• Electronic Parking Brake with auto-hold and auto-disengage function• Frameless auto-dimming rear-view mirror
INFOTAINMENT	<ul style="list-style-type: none">• 12-Speaker Bose surround-sound system, with Bose CenterPoint, BassMatch and AudioPilot technology• Wireless Apple CarPlay® & Android Auto™• Connected Services[^]• Amazon Alexa In-Car Voice Assistant• Integrated Bluetooth®• Mazda Connect multimedia system with 10.25" Colour centre display and Multimedia Commander and AM / FM / DAB radio, with 2 x USB Type-C inputs• Mazda Navigation System with European mapping and 7-years free map updates
COMFORT AND CONVENIENCE	<ul style="list-style-type: none">• Dual-zone climate control air-conditioning• Mazda Radar Cruise Control
SAFETY AND SECURITY	<ul style="list-style-type: none">• Blind Spot Monitoring with Rear Cross Traffic Alert• Driver Attention Alert• e-Call with GPS• Intelligent Speed Assist• Lane-keep Assist System with Lane Departure Warning System• Smart Brake Support - Front• Remote central locking with deadlocking• Traffic Sign Recognition

*Specification is not exhaustive. Please see www.mazda.co.uk for further information or download a Price & Specification Guide.

[^]Connected Services is a subscription service and requires a compatible mobile device to download and sign-up to the MyMazda App. A 7-year complimentary period is included and commences from the date of first registration of the vehicle. Please contact your dealer or visit www.mazda.co.uk/my-mazda for further information.

MAZDA3 SALOON PRICING - PETROL



MAZDA3 SALOON e-SKYACTIV X MHEV	P11D VALUE	CO ₂ EMISSIONS (G/KM) ¹	BIK TAX (20/40%) ²	0-62MPH (SECS)
186ps Exclusive-Line	£29,780	123	£149/£298	8.1
186ps Exclusive-Line Auto	£31,280	135	£172/£344	8.5

EXTERIOR COLOURS	BASIC PRICE	VAT	RRP~
Arctic White	£0	£0	£0
Snowflake White / Platinum Quartz / Polymetal Grey / Deep Crystal Blue / Jet Black / Ceramic White / Zircon Sand	£500.00	£100.00	£600
Machine Grey	£583.33	£116.67	£700
Soul Red Crystal	£708.33	£141.67	£850

¹ Figures shown are for comparability purposes; only compare CO₂ figures with other cars tested to the same technical procedures. These figures may not reflect real life driving results, which will depend upon a number of factors including the accessories fitted (post-registration), variations in weather, driving styles and vehicle load. All figures quoted are derived from the latest WLTP test cycle. ² BIK tax figures quoted per month in 2025/26 (except Scotland).

-Factory fitted option prices quoted are recommended retail prices and are inclusive of VAT at 20%.

Pricing and specification are subject to change. Please speak with your local dealer for latest pricing information.

MAZDA CX-30

FLOWING BEAUTY OF A COUPE,
BOLD TOUGHNESS OF AN SUV



MAZDA CX-30 MHEV

The Mazda CX-30 is a compact crossover combining the bold proportions of an SUV with elegant styling that embodies Mazda's Kodo design language.

The CX-30 features Mazda's ground-breaking e-Skyactiv X petrol engine technology, which burns less fuel than a conventional petrol engine, but makes more power. It produces fewer emissions, but provides better performance than a regular petrol engine, with CO₂ emissions as low as 130g/km and combined fuel consumption of up to 48.7mpg.

Mazda's Skyactiv-Vehicle Architecture underscores the CX-30's sleek shape, hinting at the streamlined silhouette of a coupé, while its dimensions deliver the sense of rugged stability you'd expect of an SUV.

As standard, the advanced 24V Mazda M Hybrid mild-hybrid system, uses kinetic energy from regenerative braking to power the electronics and assist acceleration, helping you enjoy outstanding performance with low running costs and a truly involving drive.

Mazda CX-30 is available with i-ACTIV All-Wheel Drive technology for increased traction and a reassuring sense of control every time. The system helps to maintain grip and steering accuracy by shifting vehicle weight upon turn entry and exit to achieve a smoother drive.



MAZDA CX-30 GRADE HIGHLIGHTS

	PRIME-LINE	CENTRE-LINE in addition to Prime-Line, Centre-Line adds:	HOMURA in addition to Prime-Line, Homura adds:	EXCLUSIVE-LINE in addition to Centre-Line, Exclusive-Line adds:	TAKUMI in addition to Exclusive-Line, Takumi adds:
EXTERIOR	<ul style="list-style-type: none"> • 16" Grey alloy wheels • Electrically-adjustable, heated, auto power folding door mirrors • Front rain-sensing wipers • LED headlights with auto levelling • Rear parking sensors • Reversing camera 	<ul style="list-style-type: none"> • Auto-dimming driver door mirror • Front and rear parking sensors • Rain-sensing front wipers 	<ul style="list-style-type: none"> • 18" Black alloy wheels • Gloss Black B-Pillar and C-Pillar • Black electrically adjustable, heated auto power-folding door mirrors • Front and rear parking sensors • Gloss Black Front grille • Power liftgate • Rear privacy glass • Rain-sensing front wipers 	<ul style="list-style-type: none"> • 18" Silver alloy wheels (e-Skyactiv G models only) • 18" Bright Silver alloy wheels (e-Skyactiv X models only) • Adaptive LED Headlights • Front and rear Signature LED lights • Power liftgate • Rear privacy glass 	<ul style="list-style-type: none"> • 360° View Monitor (front, rear and side cameras) • Door mirror tilt down when reversing • Front Wiper De-Icer
INTERIOR	<ul style="list-style-type: none"> • Colour 7-inch TFT instrument display • Electronic parking brake • Premium Dark Grey cloth trim • Windscreen projected colour Active Driving Display (Head-up display) 	<ul style="list-style-type: none"> • Auto-dimming rear view mirror • Heated front seats 	<ul style="list-style-type: none"> • Auto-dimming rear-view mirror • Black cloth seats with Red stitching • Black with Red stitching steering wheel, gearshift gaitor, dashboard panel, armrest • Heated front seats 	<ul style="list-style-type: none"> • Bright finish glove box handle • Bright surround start button • Frameless auto-dimming rear-view mirror • Steering wheel bright finish centre bezel 	<ul style="list-style-type: none"> • Black leather[†] seat trim with Rich Brown Interior Accents • Driver seat power slide, recline, height, tilt and lumbar adjustment with head-up display and driver door mirror memory
INFOTAINMENT	<ul style="list-style-type: none"> • Apple CarPlay® & Android Auto™ • Amazon Alexa In-Car Voice Assistant • Connected Services[^] • Integrated Bluetooth® • Mazda Connect (Multimedia system) with 10.25" Colour centre display and 6 speaker AM/FM/DAB radio • Mazda Navigation System with 7-years free European map updates 	<ul style="list-style-type: none"> • AM/FM/DAB Radio with 8 speakers • Qi Wireless Charging 	<ul style="list-style-type: none"> • AM/FM/DAB Radio with 8 speakers • Qi Wireless Charging 	<ul style="list-style-type: none"> • 12-speaker Bose surround-sound system, with Bose CenterPoint, BassMatch and AudioPilot technology 	
COMFORT AND CONVENIENCE	<ul style="list-style-type: none"> • Air-conditioning • Electric windows • Keyless ignition • Mazda Radar Cruise Control (Adaptive Cruise Control) 	<ul style="list-style-type: none"> • Dual-zone climate control air-conditioning with rear air vents • Drive Selection Switch (Automatic Only) 	<ul style="list-style-type: none"> • Dual-zone climate control air-conditioning with rear air vents • Drive Selection Switch (Automatic Only) 	<ul style="list-style-type: none"> • Power tilt and slide sunroof (e-Skyactiv X models only) 	<ul style="list-style-type: none"> • Cruising and Traffic Support
SAFETY AND SECURITY	<ul style="list-style-type: none"> • Blind Spot Monitoring with Rear Cross Traffic Alert • Driver Attention Alert • Hill Launch Assist • Intelligent Speed Assist • Lane-keep Assist System • Smart Brake Support – Front (Pre-crash safety system) • Traffic Sign Recognition 	<ul style="list-style-type: none"> • Smart keyless entry 	<ul style="list-style-type: none"> • Smart keyless entry 		<ul style="list-style-type: none"> • Driver Monitoring • Front Cross Traffic Alert • Smart Brake Support Rear • Smart Brake Support Rear Crossing

[†]Leather refers to centre seat facing and side supports.

[^]Specification is not exhaustive. Please see www.mazda.co.uk for further information or download a Price & Specification Guide.

[^]Connected Services is a subscription service and requires a compatible mobile device to download and sign-up to the MyMazda App. A 7-year complimentary period is included and commences from the date of first registration of the vehicle. Please contact your dealer or visit www.mazda.co.uk/my-mazda for further information.

MAZDA CX-30 PRICING – PETROL 2WD



MAZDA CX-30 e-SKYACTIV G MHEV 2WD	P11D VALUE	CO ₂ EMISSIONS (G/KM) ¹	BIK TAX (20/40%) ²	0-62MPH (SECS)
140ps 2WD Prime-Line	£25,840	135	£142/£284	9.7
140ps 2WD Centre-Line	£27,440	135	£151/£302	9.7
140ps 2WD Centre-Line Auto	£28,940	147	£169/£338	10.3
140ps 2WD Homura	£28,040	135	£154/£308	9.7
140ps 2WD Homura Auto	£29,540	147	£172/£345	10.3
140ps 2WD Exclusive-Line	£29,140	136	£160/£321	9.7
140ps 2WD Exclusive-Line Auto	£30,640	148	£179/£357	10.3
140ps 2WD Takumi	£31,540	136	£173/£347	9.7
140ps 2WD Takumi Auto	£33,040	148	£193/£385	10.3

EXTERIOR COLOURS	BASIC PRICE	VAT	RRP~
Arctic White	£0	£0	£0
Snowflake White / Platinum Quartz / Polymetal Grey / Deep Crystal Blue / Jet Black / Ceramic White / Zircon Sand	£500.00	£100.00	£600
Machine Grey	£583.33	£116.67	£700
Soul Red Crystal	£708.33	£141.67	£850

¹ Figures shown are for comparability purposes; only compare CO₂ figures with other cars tested to the same technical procedures. These figures may not reflect real life driving results, which will depend upon a number of factors including the accessories fitted (post-registration), variations in weather, driving styles and vehicle load. All figures quoted are derived from the latest WLTP test cycle. ² BIK tax figures quoted per month in 2025/26 (except Scotland).

~Factory fitted option prices quoted are recommended retail prices and are inclusive of VAT at 20%.

Pricing and specification are subject to change. Please speak with your local dealer for latest pricing information.

MAZDA CX-30 PRICING – PETROL 2WD



MAZDA CX-30 e-SKYACTIV X MHEV 2WD	P11D VALUE	CO ₂ EMISSIONS (G/KM) ¹	BIK TAX (20/40%) ²	0-62MPH (SECS)
186ps 2WD Homura	£30,440	130	£162/£325	8.3
186ps 2WD Homura Auto	£31,940	140	£181/£362	8.6
186ps 2WD Exclusive-Line	£31,640	130	£169/£337	8.3
186ps 2WD Exclusive-Line Auto	£33,140	140	£188/£376	8.6
186ps 2WD Takumi	£34,040	130	£182/£363	8.3
186ps 2WD Takumi Auto	£35,540	140	£201/£403	8.6

EXTERIOR COLOURS	BASIC PRICE	VAT	RRP~
Arctic White	£0	£0	£0
Snowflake White / Platinum Quartz / Polymetal Grey / Deep Crystal Blue / Jet Black / Ceramic White / Zircon Sand	£500.00	£100.00	£600
Machine Grey	£583.33	£116.67	£700
Soul Red Crystal	£708.33	£141.67	£850

FACTORY FITTED OPTION (optional on 186ps exclusive-line models only)	BASIC PRICE	VAT	RRP~
Luxury Pack: <ul style="list-style-type: none"> • Black leather seat trim • Driver's seat power slide, recline, height, seat tilt and lumbar adjustment • Memory settings for driver door mirror and Active Driving Display • Heated Steering wheel • Windscreen De-Icer 	£1,250.00	£250.00	£1,500

¹ Figures shown are for comparability purposes; only compare CO₂ figures with other cars tested to the same technical procedures. These figures may not reflect real life driving results, which will depend upon a number of factors including the accessories fitted (post-registration), variations in weather, driving styles and vehicle load. All figures quoted are derived from the latest WLTP test cycle. ² BIK tax figures quoted per month in 2025/26 (except Scotland).

~Factory fitted option prices quoted are recommended retail prices and are inclusive of VAT at 20%.

Pricing and specification are subject to change. Please speak with your local dealer for latest pricing information.

MAZDA CX-30 PRICING – PETROL AWD



MAZDA CX-30 e-SKYACTIV X MHEV AWD	P11D VALUE	CO ₂ EMISSIONS (G/KM) ¹	BIK TAX (20/40%) ²	0-62MPH (SECS)
186ps AWD Takumi	£36,240	139	£199/£399	8.8
186ps AWD Takumi Auto	£37,740	148	£220/£440	9.0

EXTERIOR COLOURS	BASIC PRICE	VAT	RRP~
Arctic White	£0	£0	£0
Snowflake White / Platinum Quartz / Polymetal Grey / Deep Crystal Blue / Jet Black / Ceramic White / Zircon Sand	£500.00	£100.00	£600
Machine Grey	£583.33	£116.67	£700
Soul Red Crystal	£708.33	£141.67	£850

¹ Figures shown are for comparability purposes; only compare CO₂ figures with other cars tested to the same technical procedures. These figures may not reflect real life driving results, which will depend upon a number of factors including the accessories fitted (post-registration), variations in weather, driving styles and vehicle load. All figures quoted are derived from the latest WLTP test cycle. ² BIK tax figures quoted per month in 2025/26 (except Scotland).

~Factory fitted option prices quoted are recommended retail prices and are inclusive of VAT at 20%.

Pricing and specification are subject to change. Please speak with your local dealer for latest pricing information.

MAZDA CX-5
REFINEMENT REDEFINED



MAZDA CX-5

Conceived and built to celebrate driving with superior agility and responsiveness, the Mazda CX-5 represents a stunning evolution of our celebrated Kodo design language.

Mazda Skyactiv Technology optimises driving dynamics and fuel consumption, with CO₂ emissions as low as 146g/km and combined fuel consumption of up to 50.4mpg, while the spacious interior means everyone enjoys business-class comfort and superb craftsmanship.

Bold exterior design hints at an effortless and engaging driving experience. Responsive and efficient wherever you drive it, the Mazda CX-5 delivers outstanding environmental and safety performance without compromising driving pleasure.



MAZDA CX-5 GRADE HIGHLIGHTS*

	CENTRE-LINE	NEWGROUND in addition to Centre-Line, Newground adds:	EXCLUSIVE-LINE in addition to Centre-Line, Exclusive-Line adds:	HOMURA in addition to Exclusive-Line, Homura adds:	TAKUMI in addition to Exclusive-Line, Takumi adds:
EXTERIOR	<ul style="list-style-type: none"> • 17" Silver alloy wheels • Adaptive Front lighting System • Electrically-adjustable, heated, auto power folding door mirrors • Front rain-sensing wipers • LED headlights with auto headlight levelling • Front & rear parking sensors • Rear privacy glass 	<ul style="list-style-type: none"> • 19" Black Diamond Cut alloy wheels • Black mirror caps • Lime-Green front grille accent colour • Silver front and rear under guard & side skirts 	<ul style="list-style-type: none"> • 19" Black Diamond Cut alloy wheels • Signature LED daytime running lights • Power liftgate • Power tilt and slide sunroof • Reversing camera 	<ul style="list-style-type: none"> • 19" Black alloy wheels • Gloss Black front and rear lower bumper mouldings • Gloss Black painted wheel arch and side mouldings • Gloss Black Signature wing • Gloss Black door mirrors • Power tilt and slide sunroof • Red front grille accent colour 	<ul style="list-style-type: none"> • 19" Bright alloy wheels • 360° View Monitor (front, rear and side cameras) • Adaptive LED Headlights • Power tilt and slide sunroof • Body coloured front and rear lower bumper mouldings • Body coloured wheel arch and side mouldings • Gloss Black front grille accent colour
INTERIOR	<ul style="list-style-type: none"> • 40:20:40 split fold rear seats • Auto-dimming rear view mirror • Electronic parking brake • Premium black cloth trim 	<ul style="list-style-type: none"> • 6-way power adjustable driver seat • Black half artificial leather seats with Lime-Green stitching and Black suede inserts • Heated front seats • Artificial leather door trim • Reversible waterproof cargo board 	<ul style="list-style-type: none"> • 8-way power adjustable driver's seat with memory linked to head-up display and drivers door mirror • Black leather† seat trim • Heated front seats • Heated steering wheel • Windscreen projected colour Active Driving Display (Head-up display) 	<ul style="list-style-type: none"> • Black roof lining • Black leather† with Red stitching • Black honeycomb interior decoration panel • Black honeycomb interior door trim decoration panel • Red stitching and accents on door trim, knee pad, console lid, steering wheel & gear shift boot display 	<ul style="list-style-type: none"> • Brown Nappa leather† seat trim • Frameless auto-dimming rear view mirror • Front seat ventilation • Heated outer rear seats • Wood interior trim with Black roof lining
INFOTAINMENT	<ul style="list-style-type: none"> • Wireless Apple CarPlay® & Android Auto™ • Connected services^ • Integrated Bluetooth® • Mazda Connect (Multimedia system) with 10.25" colour centre display and 6 speaker AM/FM/DAB radio • Mazda Navigation System with 5-years free European map updates 		<ul style="list-style-type: none"> • 10-Speaker Bose surround-sound system, with Bose CenterPoint and AudioPilot technology • Qi Wireless phone charging 		
COMFORT AND CONVENIENCE	<ul style="list-style-type: none"> • Dual-zone climate control air-conditioning • Electric windows • Keyless ignition (Engine start/stop button) • Mazda Radar Cruise Control (Adaptive Cruise Control) 		<ul style="list-style-type: none"> • Front windscreen wiper de-icer 		
SAFETY AND SECURITY	<ul style="list-style-type: none"> • Advanced Smart City Brake Support (Pre-crash safety system) • Blind Spot Monitoring with Rear Cross Traffic Alert • Cruising & Traffic Support • High Beam Control • Hill Launch Assist 		<ul style="list-style-type: none"> • Smart keyless entry • Traffic Sign Recognition 		<ul style="list-style-type: none"> • Driver Attention Alert • Rear Smart City Brake Support (Pre-crash safety system) • Off-Road mode (194ps model only)

†Leather refers to centre seat facing and side supports.

*Specification is not exhaustive. Please see www.mazda.co.uk for further information or download a Price & Specification Guide.

^Connected Services is a subscription service and requires a compatible mobile device to download and sign-up to the MyMazda App. A 7-year complimentary period is included and commences from the date of first registration of the vehicle. Please contact your dealer or visit www.mazda.co.uk/my-mazda for further information.

MAZDA CX-5 PRICING - PETROL 2WD



MAZDA CX-5 e-SKYACTIV G 2WD	P11D VALUE	CO ₂ EMISSIONS (G/KM) ¹	BIK TAX (20/40%) ²	0-62MPH (SECS)
165ps 2WD Centre-Line	£31,035	146	£181/£362	10.7
165ps 2WD Centre-Line Auto	£32,635	155	£201/£402	10.2
165ps 2WD Newground [^]	£32,035	146	£187/£374	10.7
165ps 2WD Newground Auto [^]	£33,635	156	£207/£415	10.2
165ps 2WD Exclusive-Line	£34,135	146	£199/£398	10.7
165ps 2WD Exclusive-Line Auto	£35,735	156	£220/£441	10.2
165ps 2WD Homura	£36,135	146	£211/£422	10.7
165ps 2WD Homura Auto	£37,735	156	£233/£465	10.2
165ps 2WD Takumi	£36,535	146	£213/£426	10.7
165ps 2WD Takumi Auto	£38,135	156	£235/£470	10.2

EXTERIOR COLOURS	BASIC PRICE	VAT	RRP~
Arctic White [^]	£0	£0	£0
Polymetal Grey [^] / Deep Crystal Blue [^] / Jet Black	£541.67	£108.33	£650
Machine Grey [^] / Rhodium White	£625.00	£125.00	£750
Soul Red Crystal	£750.00	£150.00	£900

FACTORY FITTED OPTIONS	BASIC PRICE	VAT	RRP~
Driver Assistance Pack - Includes Adaptive LED Headlamps, Driver Attention Alert, Rear Smart City Brake Support & 360° View Monitor*	£666.67	£133.33	£800

¹ Figures shown are for comparability purposes; only compare CO₂ figures with other cars tested to the same technical procedures. These figures may not reflect real life driving results, which will depend upon a number of factors including the accessories fitted (post-registration), variations in weather, driving styles and vehicle load. All figures quoted are derived from the latest WLTP test cycle. ² BIK tax figures quoted per month in 2025/26 (except Scotland).

[^]Newground only available in Arctic White, Polymetal Grey, Deep Crystal Blue or Machine Grey paint. *Only available on 165ps Exclusive-Line models.

*Only available on 165ps 2WD Exclusive-Line Petrol models.

~Factory fitted option prices quoted are recommended retail prices and are inclusive of VAT at 20%.

Pricing and specification are subject to change. Please speak with your local dealer for latest pricing information.

MAZDA CX-5 PRICING - DIESEL 2WD



MAZDA CX-5 SKYACTIV-D 2WD	P11D VALUE	CO ₂ EMISSIONS (G/KM) ¹	BIK TAX (20/40%) ²	0-62MPH (SECS)
184ps 2WD Exclusive-Line	£36,335	147	£212/£424	9.2
184ps 2WD Exclusive-Line Auto	£37,935	160	£234/£468	9.3

EXTERIOR COLOURS	BASIC PRICE	VAT	RRP~
Arctic White	£0	£0	£0
Polymetal Grey / Deep Crystal Blue / Jet Black	£541.67	£108.33	£650
Machine Grey / Rhodium White	£625.00	£125.00	£750
Soul Red Crystal	£750.00	£150.00	£900

¹ Figures shown are for comparability purposes; only compare CO₂ figures with other cars tested to the same technical procedures. These figures may not reflect real life driving results, which will depend upon a number of factors including the accessories fitted (post-registration), variations in weather, driving styles and vehicle load. All figures quoted are derived from the latest WLTP test cycle. ² BIK tax figures quoted per month in 2025/26 (except Scotland).

-Factory fitted option prices quoted are recommended retail prices and are inclusive of VAT at 20%.

Pricing and specification are subject to change. Please speak with your local dealer for latest pricing information.

MAZDA CX-5 PRICING – PETROL AWD



MAZDA CX-5 e-SKYACTIV G AWD	P11D VALUE	CO ₂ EMISSIONS (G/KM) ¹	BIK TAX (20/40%) ²	0-62MPH (SECS)
194ps AWD Takumi Auto*	£40,335	171	£249/£497	9.5

EXTERIOR COLOURS	BASIC PRICE	VAT	RRP~
Arctic White	£0	£0	£0
Polymetal Grey / Deep Crystal Blue / Jet Black	£541.67	£108.33	£650
Machine Grey / Rhodium White	£625.00	£125.00	£750
Soul Red Crystal	£750.00	£150.00	£900

*Diesel, petrol and alternative fuelled cars with a P11D price of over £40,000 in the registration year will pay an additional rate of £410 per annum on top of the standard rate, in the second to sixth year since the first registration (known as Expensive Car Supplement (ECS)). However, electric vehicles are exempted from ECS.

¹ Figures shown are for comparability purposes; only compare CO₂ figures with other cars tested to the same technical procedures. These figures may not reflect real life driving results, which will depend upon a number of factors including the accessories fitted (post-registration), variations in weather, driving styles and vehicle load. All figures quoted are derived from the latest WLTP test cycle. ² BIK tax figures quoted per month in 2025/26 (except Scotland).

~Factory fitted option prices quoted are recommended retail prices and are inclusive of VAT at 20%.

Pricing and specification are subject to change. Please speak with your local dealer for latest pricing information.

MAZDA CX-60
CRAFTED IN JAPAN



MAZDA CX-60

Designed using our award winning Kodo: Soul of Motion design philosophy, the Mazda CX-60 is our luxury SUV with striking good looks combined with an exquisitely crafted interior, driver centric cabin, and Mazda's renowned driving experience, making for a truly opulent drive.

Available with a choice of clean and economical powertrains featuring the latest in Mazda technology, our Plug-in Hybrid Electric Vehicle (PHEV) provides outstanding performance and environmental credentials with excellent fuel economy and low CO₂ emissions.

Whilst our latest in e-Skyactiv Diesel Technology features highly innovative advanced combustion technology, making it one of the cleanest diesel engines in the world.



MAZDA CX-60 GRADE HIGHLIGHTS*

EXCLUSIVE-LINE

HOMURA

in addition to Exclusive-Line, Homura adds:

HOMURA PLUS

in addition to Homura, Homura Plus adds:

EXTERIOR	<ul style="list-style-type: none"> • 18" Grey alloy wheels • Dusk-sensing headlights • Electrically-adjustable, heated auto power-folding door mirrors • Front and rear parking sensors • LED headlights with auto levelling • Reversing camera • Power liftgate with hands free function 	<ul style="list-style-type: none"> • 20" Black alloy wheels • Body coloured wheel arch mouldings • Dark plated Signature wing • Electrically-adjustable, heated auto power-folding door mirrors with memory • Gloss black honeycomb radiator grille • Gloss black wing mirrors 	<ul style="list-style-type: none"> • 360° View Monitor (front, rear and side cameras) with see through view • Adaptive LED Headlights • Rear privacy glass • Panoramic sunroof
INTERIOR	<ul style="list-style-type: none"> • 40:20:40 split fold down rear seats with remote folding • Black leather seat trim[^] • Frameless auto-dimming rear-view mirror • Front and rear electric windows with one-touch auto up/down • Instrument panel 12.3" TFT Colour driver display • Windscreen projected colour Active Driving Display 	<ul style="list-style-type: none"> • Ambient lighting • Front seat ventilation (3-stage setting) • Heated outer rear seats • Mazda Driver Personalisation System: (seat / head up display / wing mirrors / steering wheel) • Ingress / Egress support & automatic driver position guide 	<ul style="list-style-type: none"> • Door pocket illumination with front & rear door courtesy lamps • Electrical power outlet • 150W AC socket • 1500W AC socket (PHEV models only) • Front centre console storage illumination
INFOTAINMENT	<ul style="list-style-type: none"> • 12.3" Colour entertainment display with Mazda Connect infotainment • AM / FM / DAB radio with 8 speakers • Integrated Bluetooth® • USB inputs (x2 front, x2 rear) & 12V outlet (x1 front, x1 boot) • Wireless Apple CarPlay® and Android Auto™ with touch-screen function • Mazda Navigation System with 3-years free European map updates 	<ul style="list-style-type: none"> • 12-speaker Bose surround-sound system featuring Bose Centerpoint signal processing and AudioPilot 2 noise compensations technology 	<ul style="list-style-type: none"> • Qi Wireless Charging
COMFORT AND CONVENIENCE	<ul style="list-style-type: none"> • Cruise control with adjustable speed limiter • Dual-zone climate control air-conditioning with rear air vents • Front wiper de-icer • Heated front seats • Heated steering wheel • Smart keyless entry 		<ul style="list-style-type: none"> • Mazda Radar Cruise Control (features Stop & Go function) • Cruising & Traffic Support
SAFETY AND SECURITY	<ul style="list-style-type: none"> • Blind Spot Monitoring with Rear Cross Traffic Alert • Driver Attention Alert • Intelligent Speed Assist • Lane-keep Assist System with Lane Departure Warning System • Smart Brake Support Front 	<ul style="list-style-type: none"> • Driver Monitoring with personal identification 	<ul style="list-style-type: none"> • Front Cross Traffic Alert • Smart Brake Support - Rear Crossing • Smart Brake Support - Rear

[^]Leather refers to centre seat facing and side supports.

*Specification is not exhaustive. Please see www.mazda.co.uk for further information or download a Price & Specification Guide.

MAZDA CX-60 GRADE HIGHLIGHTS*

TAKUMI

In addition to Homura, Takumi adds:

TAKUMI PLUS

In addition to Takumi, Takumi Plus adds::

EXTERIOR	<ul style="list-style-type: none"> • 20" Grey Diamond Cut alloy wheels • Front grille in gloss black (bar type) with Bright finish Signature Wing • Body coloured wing mirrors with memory and selectable tilt-down function when in reverse • Wheel arch and side sill mouldings - body coloured 	<ul style="list-style-type: none"> • 360° View Monitor (front, rear and side cameras) with see through view • Adaptive LED Headlights • Rear privacy glass • Panoramic sunroof
INTERIOR	<ul style="list-style-type: none"> • Ambient lighting • Kakenui inspired stitching on dashboard panel • Front seat ventilation (3-stage setting) • Heated outer rear seats (2nd row) • Mazda Driver Personalisation System: (seat / head up display / wing mirrors / steering wheel) • White Nappa leather seat trim^ • White Maple Wood console 	<ul style="list-style-type: none"> • Door pocket illumination with front & rear door courtesy lamps • Electrical power outlet • 150W AC socket • 1500W AC socket (PHEV models only) • Front centre console storage illumination
INFOTAINMENT	<ul style="list-style-type: none"> • 12-speaker Bose surround-sound system featuring Bose Centerpoint signal processing and AudioPilot 2 noise compensations technology 	<ul style="list-style-type: none"> • Qi Wireless Charging
COMFORT AND CONVENIENCE		<ul style="list-style-type: none"> • Mazda Radar Cruise Control (features Stop & Go function) • Cruising & Traffic Support
SAFETY AND SECURITY	<ul style="list-style-type: none"> • Driver Monitoring with personal identification 	<ul style="list-style-type: none"> • Front Cross Traffic Alert • Smart Brake Support - Rear Crossing • Smart Brake Support - Rear

^Leather refers to centre seat facing and side supports.

*Specification is not exhaustive. Please see www.mazda.co.uk for further information or download a Price & Specification Guide.

MAZDA CX-60 PRICING – PHEV AWD



MAZDA CX-60 e-SKYACTIV PHEV	P11D VALUE	CO ₂ EMISSIONS (G/KM) ¹	BIK TAX (20/40%) ²	0-62MPH (SECS)
327ps AWD Exclusive-Line Auto	£46,775	32	£70/£140	5.8
327ps AWD Homura Auto	£49,925	32	£75/£150	5.8
327ps AWD Homura Plus Auto	£52,725	33	£79/£158	5.8
327ps AWD Takumi Auto	£50,875	32	£76/£153	5.8
327ps AWD Takumi Plus Auto	£53,675	32	£81/£161	5.8

EXTERIOR COLOURS	BASIC PRICE	VAT	RRP~
Arctic White	£0	£0	£0
Sonic Silver / Deep Crystal Blue / Jet Black / Platinum Quartz / Zircon Sand	£541.67	£108.33	£650
Rhodium White / Machine Grey	£625.00	£125.00	£750
Soul Red Crystal	£750.00	£150.00	£900

¹ Figures shown are for comparability purposes; only compare CO₂ figures with other cars tested to the same technical procedures. These figures may not reflect real life driving results, which will depend upon a number of factors including the accessories fitted (post-registration), variations in weather, driving styles and vehicle load. All figures quoted are derived from the latest WLTP test cycle. ²For BIK purposes, 39.15 - 39.77 miles is rounded up to 40 miles as per HMRC legislation and therefore qualifies for 8% BIK 2025/26. BIK tax figures quoted per month in 2025/26 (except Scotland).

~Factory fitted option prices quoted are recommended retail prices and are inclusive of VAT at 20%.

Figures are subject to final homologation.

Pricing and specification are subject to change. Please speak with your local dealer for latest pricing information.

MAZDA CX-60 PRICING – PHEV AWD



FACTORY FITTED OPTIONS~	BASIC PRICE	VAT	RRP~	
Comfort Pack¹⁾: <ul style="list-style-type: none"> • 20" Silver alloy wheels • Door mirror memory with selectable tilt-down function when in reverse • Driver Monitoring (DM) • Electrically operated driver and front passenger seat (power slide, recline, height and lumbar adjustment) 	<ul style="list-style-type: none"> • Front seat ventilation with 3-stage setting • Heated outer rear seats • Mazda Driver Personalisation System (excludes steering wheel function & driver seat ingress/egress support) 	£1,166.67	£233.33	£1,400
Convenience & Driver Assistance Pack²⁾: <ul style="list-style-type: none"> • 360° View Monitor with see through view • Adaptive LED Headlights • Mazda Radar Cruise Control • Cruising & Traffic Support • Intelligent Speed Assist • Front Cross Traffic Alert • Rear Smart Brake Support • Rear Crossing Smart Brake Support 	<ul style="list-style-type: none"> • Qi Wireless Phone Charging • Rear Privacy Glass • 150W AC socket • 1500W AC socket (PHEV models only) • Front centre console storage illumination • Door pocket illumination with front & rear door courtesy lamps[^] 	£1,750.00	£350.00	£2,100
Panoramic sunroof³⁾	£833.33	£166.67	£1,000	

¹⁾Optional on Exclusive-Line models only.

²⁾Optional on Exclusive-Line & Homura. Only available in conjunction with Comfort Pack on Exclusive-Line models.

³⁾Panoramic sunroof is only available as an option on Homura grades.

~Factory fitted option prices quoted are recommended retail prices and are inclusive of VAT at 20%.

[^]Part of Convenience & Driver Assistance Pack on Exclusive-Line only. For all other grades, this feature comes as standard.

MAZDA CX-60 PRICING – DIESEL



MAZDA CX-60 e-SKYACTIV D MHEV	P11D VALUE	CO ₂ EMISSIONS (G/KM) ¹	BIK TAX (20/40%) ²	0-62MPH (SECS)
200ps RWD Exclusive-Line Auto	£46,405	131	£247/£495	8.4
254ps AWD Exclusive-Line Auto	£49,055	138	£270/£540	7.4
254ps AWD Homura Auto	£52,205	140	£296/£592	7.4
254ps AWD Homura Plus Auto	£54,805	142	£311/£621	7.4
254ps AWD Takumi Auto	£53,155	140	£301/£602	7.4
254ps AWD Takumi Plus Auto	£55,755	142	£316/£632	7.4

EXTERIOR COLOURS	BASIC PRICE	VAT	RRP~
Arctic White	£0	£0	£0
Sonic Silver / Deep Crystal Blue / Jet Black / Platinum Quartz	£541.67	£108.33	£650
Rhodium White / Machine Grey	£625.00	£125.00	£750
Soul Red Crystal	£750.00	£150.00	£900

¹ Figures shown are for comparability purposes; only compare CO₂ figures with other cars tested to the same technical procedures. These figures may not reflect real life driving results, which will depend upon a number of factors including the accessories fitted (post-registration), variations in weather, driving styles and vehicle load. All figures quoted are derived from the latest WLTP test cycle. ² BIK tax figures quoted per month in 2025/26 (except Scotland).

~Factory fitted option prices quoted are recommended retail prices and are inclusive of VAT at 20%.

Figures are subject to final homologation.

Pricing and specification are subject to change. Please speak with your local dealer for latest pricing information.

MAZDA CX-60 PRICING – DIESEL



FACTORY FITTED OPTIONS~	BASIC PRICE	VAT	RRP~	
Comfort Pack¹⁾: <ul style="list-style-type: none"> • 20" Silver alloy wheels • Door mirror memory with selectable tilt-down function when in reverse • Driver Monitoring (DM) • Electrically operated driver and front passenger seat (power slide, recline, height and lumbar adjustment) 	<ul style="list-style-type: none"> • Front seat ventilation with 3-stage setting • Heated outer rear seats with 3-stage setting • Mazda Driver Personalisation System (adjustments include driver seat, head-up display & wing mirrors) 	£1,166.67	£233.33	£1,400
Convenience & Driver Assistance Pack²⁾: <ul style="list-style-type: none"> • 360° View Monitor with see through view • Adaptive LED Headlights • Mazda Radar Cruise Control • Cruising & Traffic Support • Intelligent Speed Assist • Front Cross Traffic Alert • Rear Smart Brake Support • Rear Crossing Smart Brake Support 	<ul style="list-style-type: none"> • Qi Wireless Phone Charging • Rear Privacy Glass • 150W AC socket • Front centre console storage illumination • Door pocket illumination with front & rear door courtesy lamps[^] 	£1,583.33	£316.67	£1,900
Panoramic sunroof³⁾	£833.33	£166.67	£1,000	

¹⁾Optional on Exclusive-Line models only.

²⁾Optional on Exclusive-Line & Homura. Only available in conjunction with Comfort Pack on Exclusive-Line models.

³⁾Panoramic sunroof is only available as an option on Homura and Takumi grades.

~Factory fitted option prices quoted are recommended retail prices and are inclusive of VAT at 20%.

[^]Part of Convenience & Driver Assistance Pack on Exclusive-Line only. For all other grades, this feature comes as standard.

ALL-NEW MAZDA CX-80
DISCOVER OUR MOST SPACIOUS SUV



MAZDA CX-80

The all-new Mazda CX-80 is our most spacious SUV. Maximising comfort and cargo space with three rows of highly comfortable, luxurious seating for up to seven passengers. Spacious and versatile, the interior is crafted using the finest materials offering passengers a luxurious space to travel in with every element carefully crafted for to offer the most relaxing drive.

Offered with a choice of powertrains, our PHEV provides you with an all-electric mode which covers most of your daily driving needs, and a powerful petrol engine providing you with maximum flexibility and zero range anxiety.

For those that travel regular long distances, the e-Skyactiv Diesel powertrain is one of the cleanest diesel engines in the world, offering low emissions, great fuel economy and superb towing ability of up to 2,500kg.



MAZDA CX-80 – PHEV GRADE HIGHLIGHTS*

EXCLUSIVE-LINE

HOMURA

in addition to Exclusive-Line, Homura adds:

HOMURA PLUS

in addition to Homura, Homura Plus adds:

EXTERIOR	<ul style="list-style-type: none"> • 18" Grey alloy wheels • Dusk-sensing headlights • Electrically adjustable, heated auto power-folding door mirrors • Front and rear parking sensors • LED headlights with auto levelling • Reversing camera • Power liftgate with hands free function 	<ul style="list-style-type: none"> • 20" Black alloy wheels • Body coloured wheel arch mouldings • Dark plated Signature wing • Door mirrors with memory and selectable tilt-down function when in reverse • Gloss black honeycomb radiator grille • Gloss black wing mirrors 	<ul style="list-style-type: none"> • 360° View Monitor with see through view and trailer connection support view • Adaptive LED Headlights • Panoramic sunroof • Rear Privacy Glass
INTERIOR	<ul style="list-style-type: none"> • Black leather seat trim[^] • Frameless auto-dimming rear-view mirror • Front and rear electric windows with one-touch auto up/down • Heated, leather-wrapped steering wheel • Instrument panel 12.3" TFT Colour driver display • Windscreen projected colour Active Driving Display 	<ul style="list-style-type: none"> • Ambient lighting • Black Nappa leather seat trim[^] • Black roof lining • Front seat ventilation (3-stage setting) • Heated outer rear seats (2nd row) • Mazda Driver Personalisation System: (seat / head up display / wing mirrors / steering wheel) 	<ul style="list-style-type: none"> • Door pocket illumination and front & rear door courtesy lamps • Electrical power outlet - 150W AC socket • Electrical power outlet - 1500W AC socket (PHEV models only) • Front centre storage illumination
INFOTAINMENT	<ul style="list-style-type: none"> • 12.3" Colour entertainment display with Mazda Connect infotainment • AM / FM / DAB radio with 8 speakers • Amazon Alexa car integration • Integrated Bluetooth[®] • USB-C inputs (x2 front, x2 second row, x2 third row) • Wireless Apple CarPlay[®] and Android Auto[™] with touch-screen function • Mazda Navigation System with 5-years free European map updates 	<ul style="list-style-type: none"> • 12-speaker Bose surround-sound system featuring Bose Centerpoint signal processing and AudioPilot 2 noise compensations technology 	<ul style="list-style-type: none"> • Qi wireless charging
COMFORT AND CONVENIENCE	<ul style="list-style-type: none"> • Cruise control with adjustable speed limiter • Three-zone climate control air-conditioning with rear air vents • Front wiper de-icer • Heated front seats • Integrated sunshade - rear doors • Smart keyless entry 		<ul style="list-style-type: none"> • Cruising and Traffic Support • Mazda Radar Cruise Control
SAFETY AND SECURITY	<ul style="list-style-type: none"> • Blind Spot Monitoring with Rear Cross Traffic Alert • Driver Monitoring • Emergency Lane-Keeping with Road Keep Assist • Lane-keep Assist System with Lane Departure Warning System • Smart Brake Support 	<ul style="list-style-type: none"> • Driver Monitoring with personal identification 	

[^]Leather refers to centre seat facing and side supports.

*Specification is not exhaustive. Please see www.mazda.co.uk for further information or download a Price & Specification Guide.

MAZDA CX-80 – PHEV GRADE HIGHLIGHTS*

TAKUMI

in addition to Exclusive-Line, Takumi adds:

TAKUMI PLUS

In addition to Takumi, Takumi Plus adds:

EXTERIOR	<ul style="list-style-type: none"> • 20" Grey Diamond Cut alloy wheels • Body coloured wheel arch mouldings • Door mirrors with memory and selectable tilt-down function when in reverse 	<ul style="list-style-type: none"> • 360° View Monitor with see through view and trailer connection support view • Adaptive LED Headlights • Panoramic sunroof • Rear Privacy Glass
INTERIOR	<ul style="list-style-type: none"> • Ambient lighting • Kakenui inspired stitching on dashboard panel • Front seat ventilation (3-stage setting) • Heated outer rear seats (2nd row) • Mazda Driver Personalisation System: (seat / head up display / wing mirrors / steering wheel) • White Nappa leather seat trim^ • White Maple Wood console panel 	<ul style="list-style-type: none"> • Door pocket illumination and front & rear door courtesy lamps • Electrical power outlet - 150W AC socket • Electrical power outlet - 1500W AC socket (PHEV models only) • Front centre storage illumination
INFOTAINMENT	<ul style="list-style-type: none"> • 12-speaker Bose surround-sound system featuring Bose Centerpoint signal processing and AudioPilot 2 noise compensations technology 	<ul style="list-style-type: none"> • Qi wireless charging
COMFORT AND CONVENIENCE		<ul style="list-style-type: none"> • Cruising and Traffic Support • Mazda Radar Cruise Control
SAFETY AND SECURITY	<ul style="list-style-type: none"> • Driver Monitoring with personal identification 	

^Leather refers to centre seat facing and side supports.

*Specification is not exhaustive. Please see www.mazda.co.uk for further information or download a Price & Specification Guide.

MAZDA CX-80 PRICING – PHEV AWD



MAZDA CX-80 e-SKYACTIV PHEV	P11D VALUE	CO ₂ EMISSIONS (G/KM) ¹	BIK TAX (20/40%)	0-62MPH (SECS)
327ps AWD Exclusive-Line Auto	£49,915	35-38	£108/£216	6.8
327ps AWD Homura Auto	£53,065	35-38	£115/£230	6.8
327ps AWD Homura Plus Auto	£55,715	36-38	£121/£241	6.8
327ps AWD Takumi Auto	£54,015	35-38	£117/£234	6.8
327ps AWD Takumi Plus Auto	£56,665	35-38	£123/£246	6.8

EXTERIOR COLOURS	BASIC PRICE	VAT	RRP~
Arctic White	£0	£0	£0
Melting Copper / Deep Crystal Blue / Jet Black / Platinum Quartz	£541.67	£108.33	£650
Rhodium White / Machine Grey	£625.00	£125.00	£750
Artisan Red / Soul Red Crystal	£750.00	£150.00	£900

¹ Figures shown are for comparability purposes; only compare CO₂ figures with other cars tested to the same technical procedures. These figures may not reflect real life driving results, which will depend upon a number of factors including the accessories fitted (post-registration), variations in weather, driving styles and vehicle load. All figures quoted are derived from the latest WLTP test cycle. BIK tax figures quoted per month in 2025/26 (except Scotland).

-Factory fitted option prices quoted are recommended retail prices and are inclusive of VAT at 20%.

Pricing and specification are subject to change. Please speak with your local dealer for latest pricing information.

MAZDA CX-80 PRICING – PHEV AWD



FACTORY FITTED OPTIONS~	BASIC PRICE	VAT	RRP~
Comfort Pack¹⁾: <ul style="list-style-type: none"> • 20" Silver alloy wheels • Door mirror memory with selectable tilt-down function when in reverse • Electrically operated driver and front passenger seat (power slide, recline, height and lumbar adjustment) • Front seat ventilation with 3-stage setting • Heated outer rear seats (second row) with 3-stage setting • One-touch walk-in (3-seat bench only) • Mazda Driver Personalisation System (adjustments include driver seat, head-up display & wing mirrors) 	£1,166.67	£233.33	£1,400
Convenience & Driver Assistance Pack: <ul style="list-style-type: none"> • 360° View Monitor with see through view & trailer connection support • Adaptive LED Headlights • Mazda Radar Cruise Control • Cruising & Traffic Support • Intelligent Speed Assist • Qi Wireless Phone Charging • Rear Privacy Glass • 150W AC socket • 1500W AC socket (PHEV models only) • Front centre console storage illumination • Door pocket illumination with front & rear door courtesy lamps 	£1,625.00	£325.00	£1,950
Homura/Homura Plus - Captains Chairs (6-seat configuration) Second row of 2 heated Captains Chairs (in lieu of 3 seat bench) with centre walkthrough	£0.00	£0.00	£0
Takumi Plus - Captains Chairs (6-seat configuration) Second row of 2 heated and ventilated Captains Chairs (in lieu of 3 seat bench) with centre console	£625.00	£125.00	£750
Panoramic sunroof²⁾	£833.33	£166.67	£1,000

¹⁾Optional on Exclusive-Line models only.

²⁾Panoramic sunroof is only available as an option on Homura and Takumi grades.

--Factory fitted option prices quoted are recommended retail prices and are inclusive of VAT at 20%.

MAZDA CX-80 PRICING – DIESEL AWD



MAZDA CX-80 e-SKYACTIV D MHEV	P11D VALUE	CO ₂ EMISSIONS (G/KM) ¹	BIK TAX (20/40%)	0-62MPH (SECS)
254ps AWD Exclusive-Line Auto	£52,180	148	£304/£609	8.4
254ps AWD Homura Auto	£55,330	149	£323/£646	8.4
254ps AWD Homura Plus Auto	£57,780	151	£347/£693	8.4
254ps AWD Takumi Auto	£56,280	149	£328/£657	8.4
254ps AWD Takumi Plus Auto	£58,730	151	£352/£705	8.4

EXTERIOR COLOURS	BASIC PRICE	VAT	RRP~
Arctic White	£0	£0	£0
Melting Copper / Deep Crystal Blue / Jet Black / Platinum Quartz	£541.67	£108.33	£650
Rhodium White / Machine Grey	£625.00	£125.00	£750
Artisan Red / Soul Red Crystal	£750.00	£150.00	£900

¹ Figures shown are for comparability purposes; only compare CO₂ figures with other cars tested to the same technical procedures. These figures may not reflect real life driving results, which will depend upon a number of factors including the accessories fitted (post-registration), variations in weather, driving styles and vehicle load. All figures quoted are derived from the latest WLTP test cycle. BIK tax figures quoted per month in 2025/26 (except Scotland).

-Factory fitted option prices quoted are recommended retail prices and are inclusive of VAT at 20%.

Pricing and specification are subject to change. Please speak with your local dealer for latest pricing information.

MAZDA CX-80 PRICING – DIESEL AWD



FACTORY FITTED OPTIONS~	BASIC PRICE	VAT	RRP~
Comfort Pack¹⁾: <ul style="list-style-type: none"> • 20" Silver alloy wheels • Door mirror memory with selectable tilt-down function when in reverse • Electrically operated driver and front passenger seat (power slide, recline, height and lumbar adjustment) • Front seat ventilation with 3-stage setting • Heated outer rear seats (second row) with 3-stage setting • One-touch walk-in (3-seat bench only) • Mazda Driver Personalisation System (adjustments include driver seat, head-up display & wing mirrors) 	£1,166.67	£233.33	£1,400
Convenience & Driver Assistance Pack: <ul style="list-style-type: none"> • 360° View Monitor with see through view & trailer connection support • Adaptive LED Headlights • Mazda Radar Cruise Control • Cruising & Traffic Support • Intelligent Speed Assist • Qi Wireless Phone Charging • Rear Privacy Glass • 150W AC socket • Front centre console storage illumination • Door pocket illumination with front & rear door courtesy lamps 	£1,458.33	£291.67	£1,750
Homura/Homura Plus - Captains Chairs (6-seat configuration) Second row of 2 heated Captains Chairs (in lieu of 3 seat bench) with centre walkthrough	£0.00	£0.00	£0
Takumi Plus - Captains Chairs (6-seat configuration) Second row of 2 heated and ventilated Captains Chairs (in lieu of 3 seat bench) with centre console	£625.00	£125.00	£750
Panoramic sunroof²⁾	£833.33	£166.67	£1,000

¹⁾Optional on Exclusive-Line models only.

²⁾Panoramic sunroof is only available as an option on Homura and Takumi grades.

~Factory fitted option prices quoted are recommended retail prices and are inclusive of VAT at 20%.

MAZDA CX-60 & MAZDA CX-80 - PHEV

e-SKYACTIV PHEV – PLUG-IN HYBRID ELECTRIC VEHICLE

In order to achieve better environmental performance without compromising on the intuitive driving you come to expect from a Mazda, we developed our Plug-in Hybrid vehicles, the Mazda CX-60 and the all-new Mazda CX-80.

Ideal for those drivers who want to transition into the EV lifestyle, this e-Skyactiv Plug-in Hybrid SUV is the most powerful car Mazda has produced. It is equipped with a naturally-aspirated four-cylinder 2.5-litre engine, coupled with a 129KW electric motor and a 355V, 17.8kWh

high-capacity lithium-ion battery. This combination of engine and motor delivers a total system output of 327ps and 500Nm of torque.

Mazda's first PHEV also displays outstanding environmental credentials with the ability to drive utilising just the electric motor, meaning that the vehicle will use no petrol and produce 0g/km of CO₂. And using a combination of both petrol and electric driving, the Mazda CX-60 and Mazda CX-80 exceptional fuel consumption and low emissions.

CHARGING OVERVIEW

What you need to know...

- The Mazda CX-60 & CX-80 are compatible with the most common charging connectors (Type2) for both at home and out-of-home charging, via AC.
- Charging cables and power sockets are completely waterproof so can be used at any time to charge your vehicle.
- The sockets lock into the car, meaning it is secure and safe to leave unattended.
- A Type 2 Mode 2 cable for AC charging via a UK 3-pin plug and a Type 2 Mode 3 cable for AC charging via home or public charge points are both included with the car.
- Maximum charge of 7.2kW taking approximately 2 hours 20 minutes to charge from 0-100%.[^]



[^]Charging times are based on an ambient temperature of 20°C and will vary depending on a variety of factors including the output of the charger being used, ambient temperature and battery state. Figures shown are for Mazda CX-60 PHEV.

MAZDA CX-60 & MAZDA CX-80 - DIESEL

e-SKYACTIV D MHEV – MILD HYBRID ELECTRIC VEHICLE

For those who frequently drive long distances or need to regularly tow heavy loads, we have developed the latest in Diesel engine technology.

Our 3.3-litre in-line six-cylinder e-Skyactiv D diesel engine features Distribution-Controlled partially Premixed Compression Ignition (DCPCI) Technology. This highly innovative advanced combustion technology makes the new e-Skyactiv D one of the cleanest diesel engines in the world.

Developed using our 'right sizing' concept which optimises displacement to improve both fuel and power efficiency, the all-new direct injection inline six-cylinder e-Skyactiv D is available with a choice of two power outputs: 200ps with rear-wheel drive which provides

450Nm of torque (Mazda CX-60), and 254ps with Mazda i-Activ AWD (all-wheel drive) which provides 550Nm of torque (Mazda CX-60 and Mazda CX-80).

Both Diesel powertrains feature a new 48v Mazda M Hybrid Boost system. Our innovative evolution of mild hybrid vehicle technology uses three main components to capture energy that is normally wasted during braking. It stores that energy within the 48v Lithium-ion Battery and uses it to assist the engine and power the car's electrical systems, meaning you can drive further on a tank of fuel whilst also contributing to lower CO₂ emissions and other particulates.



MAZDA MX-30



MAZDA MX-30 R-EV

The Mazda MX-30 R-EV presents drivers with a remarkable opportunity for an uninterrupted electric drive. It stands out as a unique plug-in hybrid, as it combines the best of all-electric driving characteristics with a lightweight rotary generator that recharges the battery, never driving the wheels. This gives up to 53 miles** of pure electric range, with the capability of longer journeys up to 390 miles** when needed.

The lightweight battery in the Mazda MX-30 was engineered to meet your everyday needs while minimising its environmental impact. Whenever you're ready to get going, look forward to intuitive handling and a confident driving experience that stimulates your senses and elevates your mood.

The Mazda MX-30 e-Skyactiv R-EV plug-in hybrid has been awarded the maximum five-star rating by Euro NCAP in its latest series of tests and has also been named Best Hybrid Small SUV in the 2024 What Car? Electric Car of the Year awards.

*Tax year 2025/26.

**Range figures are for comparison purposes and may not always reflect real life driving results which depend on a number of factors. These include the starting charge of the battery, accessories fitted (post registration), variations in weather, driving styles, vehicle load and use of features such as air conditioning or heated seats.



MAZDA MX-30 R-EV GRADE HIGHLIGHTS*

	PRIME-LINE	EXCLUSIVE-LINE in addition to Prime-Line, Exclusive-Line adds:	MAKOTO in addition to Exclusive-Line, Makoto adds:
EXTERIOR	<ul style="list-style-type: none"> • 18" Grey alloy wheels • Black electrically-adjustable, heated, auto power folding door mirrors • Front rain-sensing wipers • LED headlights with auto levelling • Front and rear parking sensors • Reversing camera 	<ul style="list-style-type: none"> • 18" Black Diamond Cut alloy wheels • Auto-dimming driver door mirror with adjustable memory linked to head-up display and driver seat • Privacy glass (rear side and rear windows) 	<ul style="list-style-type: none"> • 360° View Monitor (front, rear and side cameras) • Front windscreen wiper de-icer • Power tilt and slide sunroof
INTERIOR	<ul style="list-style-type: none"> • Light Grey Cloth with Dark Grey trim • 7-inch colour touch-screen for climate control settings • Electronic parking brake • Windscreen projected colour Active Driving Display (Head-up display) 	<ul style="list-style-type: none"> • Light Grey Cloth with Stone Artificial Leather • Driver seat power slide, recline, height, tilt and lumbar adjustment with head-up display and driver door mirror memory • Frameless auto-dimming rear view mirror • Heated front seats 	<ul style="list-style-type: none"> • Dark Grey Cloth with Black Artificial Leather • 150W standard UK 3-pin plug socket • Heated steering wheel
INFOTAINMENT	<ul style="list-style-type: none"> • Apple CarPlay® & Android Auto™ • Connected services^ • Integrated Bluetooth® • Mazda Connect (Multimedia system) with 8.8" TFT Colour centre display and 8 speaker FM/DAB radio • Mazda Navigation System with 5-years free European map updates 		<ul style="list-style-type: none"> • 12-speaker Bose surround-sound system, with Bose CenterPoint, BassMatch and AudioPilot technology.
COMFORT AND CONVENIENCE	<ul style="list-style-type: none"> • Climate control air-conditioning • Front electric windows • Keyless ignition (Power start/stop button) • Mazda Radar Cruise Control (Adaptive Cruise Control) 		<ul style="list-style-type: none"> • Cruising and Traffic Support
SAFETY AND SECURITY	<ul style="list-style-type: none"> • Blind Spot Monitoring with Rear Cross Traffic Alert • Driver Attention Alert • Hill Launch Assist • Intelligent Speed Assist • Smart Brake Support (Pre-crash safety system) • Traffic Sign Recognition 	<ul style="list-style-type: none"> • Smart keyless entry 	<ul style="list-style-type: none"> • Driver Monitoring • Front Cross Traffic Alert • Smart Brake Support - Rear (Pre-crash safety system) • Smart Brake Support - Rear Crossing (Pre-crash safety system)

*Specification is not exhaustive. Please see www.mazda.co.uk for further information or download a Price & Specification Guide.

^Connected Services is a subscription service and requires a compatible mobile device to download and sign-up to the MyMazda App. A 7-year complimentary period is included and commences from the date of first registration of the vehicle. Please contact your dealer or visit www.mazda.co.uk/my-mazda for further information.

MAZDA MX-30 PRICING



MAZDA MX-30 e-SKYACTIV R-EV	P11D VALUE	CO ₂ EMISSIONS (G/KM) ¹	BIK TAX (20/40%) ²	0-62MPH (SECS)
R-EV 170ps Prime-Line Auto	£32,340	22 ^{^^}	£49/£97	9.1
R-EV 170ps Exclusive-Line Auto	£34,340	22 ^{^^}	£52/£103	9.1
R-EV 170ps Makoto Auto	£36,740	22 ^{^^}	£55/£110	9.1

EXTERIOR COLOURS	BASIC PRICE	VAT	RRP~
Polymetal Grey / Ceramic White / Jet Black	£0	£0	£0
Machine Grey	£83.33	£16.67	£100
Ceramic White with Black Side Panels and Roof [^]	£750.00	£150.00	£900
Jet Black with Silver Side Panels [^]	£750.00	£150.00	£900
Soul Red Crystal with Black Side Panels and Roof [^]	£1,000	£200.00	£1,200

¹ Figures shown are for comparability purposes; only compare CO₂ figures with other cars tested to the same technical procedures. These figures may not reflect real life driving results, which will depend upon a number of factors including the accessories fitted (post-registration), variations in weather, driving styles and vehicle load. All figures quoted are derived from the latest WLTP test cycle. ² BIK tax figures quoted per month in 2025/26 (except Scotland). ^{^^} Weighted Combined CO₂ emissions.

[^] Not available on Prime-Line models. *Available on Makoto only.

-Factory fitted option prices quoted are recommended retail prices and are inclusive of VAT at 20%. Pricing and specification are subject to change. Please speak with your local dealer for latest pricing information.

MAZDA MX-30 - R-EV

Mazda was the first in the world to successfully commercialize the rotary engine and it has been a special part of Mazda history that represents our “never-stop challenging spirit” ever since.

Despite discontinuing mass-production rotary engine vehicles in 2012, we have continued researching and developing the rotary engine, determined to keep its flame alive. Now, ten years later, the Mazda MX-30—the leading model for Mazda electrification technology—has given the rotary engine a new role and it is making a comeback as a generator.

Rotary engines are known for their compact size and, by using one as a generator, we were able to incorporate the best aspects of a series drive system, in which drive is entirely motor-powered, into a unique plug-in hybrid that offers customers more ways of using their car as an electric vehicle—the Mazda MX-30 e-Skyactiv R-EV.

With the Mazda MX-30 e-Skyactiv R-EV, we are offering a new option for customers who want the flexibility of longer drives at the



weekend or for those holiday road trips, without compromising on the benefits of Mazda’s truly unique electric driving experience.

The MX-30 R-EV is equipped with a 17.8kWh lithium-ion battery capable of driving on pure EV mode for up to 53 miles*, far exceeding the average daily commute of UK drivers. And for when a longer journey is required, the battery is paired with an 830cc Rotary engine, giving complete peace of mind with up to 390 miles of total range*. The perfect companion for the weekend roadtrip or vacation.

Charging overview - What you need to know...

- The Mazda MX-30 is compatible with the most common charging connectors (CCS and Type 2) for both at-home and out-of-home charging, via AC or DC
- There are a number of third party apps available to also help locate charging points, meaning you can plan where you want to charge when out and about
- Charging cables and power sockets are completely weatherproof so can be used at any time to charge your Mazda MX-30
- The sockets lock into the car, meaning it is secure and safe to leave unattended

* Range figures are for comparison purposes and may not always reflect real life driving results which depend on a number of factors. These include the starting charge of the battery, accessories fitted (post registration), variations in weather, driving styles, vehicle load and use of features such as air conditioning or heated seats.

SKYACTIV-VEHICLE DYNAMICS - ENGINES AND MAZDA M HYBRID MHEV

SKYACTIV-G / e-SKYACTIV G

Both our Skyactiv-G and e-Skyactiv G engines are highly-efficient direct-injection petrol engines, achieving impressive engine efficiency thanks to the high compression combustion, resulting in excellent fuel economy and low CO₂ emissions.

Our 140ps e-Skyactiv G*, 165ps e-Skyactiv G**, and 194ps Petrol*** engines also feature cylinder deactivation, delivering further improvements in economy and efficiency by automatically switching between two-cylinder and four-cylinder operation when cruising at constant speeds and not when under heavy loads. The engine shuts down two of the four cylinders with fuel injection and injection timing precisely controlled, so that the cylinder deactivation isn't noticeable to the driver.



e-SKYACTIV X****

The 186ps e-Skyactiv X powertrain is the very latest in engine technology providing more power, improved fuel efficiency and even lower CO₂ emissions. Exclusive to Mazda, e-Skyactiv X burns petrol more efficiently thanks to our pioneering Spark Controlled Compression Ignition (SPCCI).

With SPCCI, an extremely lean mix of fuel and air are compressed to an extremely high pressure. A spark then ignites a very small, dense amount of fuel, which further raises the heat and pressure in the cylinder, causing the remaining fuel to ignite under pressure (like a diesel). This means you get all the performance of a naturally aspirated petrol engine, but with the fuel economy and low CO₂ emissions of a Diesel.



* 140ps e-Skyactiv G engines available on Mazda3 and CX-30 models.

** 165ps e-Skyactiv G engines available on 2023 Mazda CX-5 models.

*** 194ps Petrol available on Mazda CX-5 models.

**** 186ps e-Skyactiv X engines available on Mazda3 and Mazda CX-30 models.

Mazda2 Hybrid does not feature Skyactiv Vehicle Technology.

SKYACTIV-VEHICLE DYNAMICS - ENGINES AND MAZDA M HYBRID MHEV

SKYACTIV-D

Offering the world's lowest compression ratio diesel engines, both our 2.2 SKYACTIV-D* and 3.3 E-SKYACTIV D** are fully compliant with all Euro 6 standards, are clean and efficient and are designed to offer you the right engine for your needs without compromise. This delivers on our promise of cars that are fun to drive and meets our commitment to protecting the environment.

Our innovative SKYACTIV diesel technology has a compression ratio much lower than traditional diesels; this allows the combustion temperature and pressure at the optimal moment to be lower, extending ignition so the air and fuel has time to mix much better, making combustion more uniform and complete. The more complete the combustion, the less CO₂ and NO_x is produced.



MAZDA M HYBRID CAR



Mazda M Hybrid is our innovative evolution of hybrid car technology. It uses four main components to capture energy that is normally wasted during braking. It stores that energy within the 24v Lithium-ion Battery and uses it to assist the engine and power the car's electrical systems, meaning you can drive further on a tank of fuel whilst also contributing to lower CO₂ emissions and other particulates.

The Mazda3 and Mazda CX-30 feature this new technology which comes as standard on both e-Skyactiv G and e-Skyactiv X petrol engines. The result is a car that delivers outstanding performance, low running costs and strong environmental credentials.

* 2.2 Skyactiv-D engines available on Mazda CX-5 models.

**3.3 e-Skyactiv-D engines available on Mazda CX-60 and Mazda CX-80 models.

Mazda2 Hybrid does not feature Skyactiv Vehicle Technology.

SKYACTIV-VEHICLE DYNAMICS – TRANSMISSIONS, BODY AND CHASSIS

TRANSMISSIONS

SKYACTIV-MT is a light and compact manual transmission system that combines superior fuel economy with the crisp shifting feel of a sports car, ensuring perfect control.

Also available is Mazda's highly-efficient, 6-speed or 8-speed SKYACTIV-DRIVE automatic transmission. Featuring the best attributes of CVT, Dual Clutch and conventional automatic transmissions, SKYACTIV-DRIVE provides you with a direct feel with smooth gear shifts leading to great fuel economy.



SKYACTIV-BODY

For a car to excel in its basic functions – accelerate, turn and stop – it must have a lean body, but also be sturdy to ensure safety. Each body has been designed around these elements leading to a light, rigid and robust body that ensures safe and joyful driving.

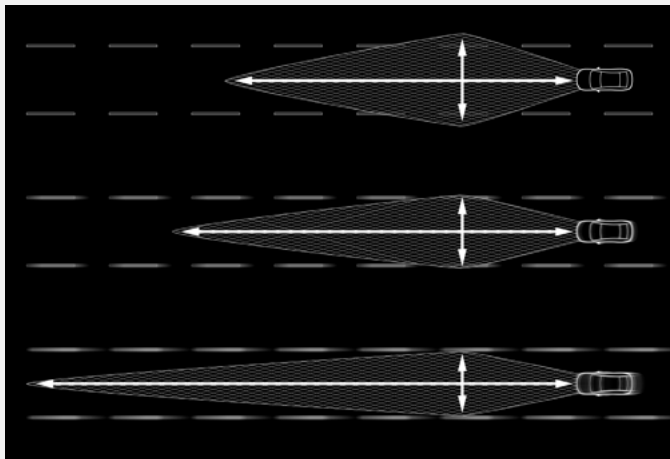


SKYACTIV-CHASSIS

Providing a lightweight chassis that delivers driving pleasure and comfort, leading to that pure 'Jinba-Ittai' oneness between car and driver. The perfectly fine tuned chassis provides our famed driving experience of agility at low and medium speeds, and stability at motorway speeds for both driving pleasure and comfort.



Advanced Technology



ADAPTIVE LED HEADLIGHTS

Mazda's Adaptive LED Headlights provide the ultimate in headlight technology, lighting up the road ahead as if it were daytime and allowing anybody to enjoy safe and stress-free driving at any time of day.

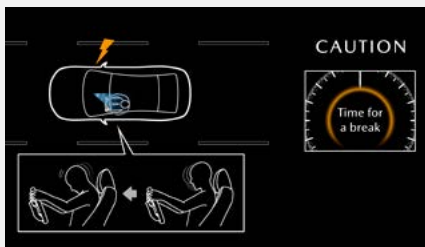
The system increases visibility at night to help drivers stay vigilant by combining three technologies: Wide-range Low Beams which light up a wider area at low speeds, Highway mode which helps you see further when travelling at speed, and Glare-free High Beams which automatically dim part of the illuminated area to avoid dazzling other drivers.

(Available on certain grades across the entire Mazda range)

COLOUR ACTIVE DRIVING DISPLAY (HEAD-UP DISPLAY)

The system includes Traffic Sign Recognition* and projects full-colour information directly within the driver's line of sight. The information displayed includes speed, turn-by-turn navigation, speed limit information*, vehicle status and advanced safety equipment status.

(Available on certain grades on Mazda CX-5. Standard across the range on Mazda3, Mazda CX-30, Mazda MX-30, Mazda CX-60 and Mazda CX-80)

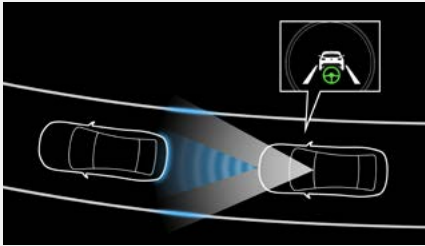


DRIVER MONITORING

Detects sleepiness or inattention by monitoring changes in expression or movement of the driver's line of sight. A camera and infrared LED monitor the driver's condition both day and night. If the system determines that the driver has fallen asleep or is inattentive, it sounds an alert to make the driver aware while also preparing for automatic braking to help prepare for a potential incident.

(Available on certain grades on Mazda3, Mazda CX-30, Mazda MX-30, Mazda CX-60 & Mazda CX-80)

Advanced Technology



CRUISING & TRAFFIC SUPPORT (CTS)

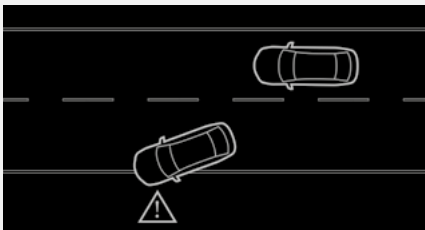
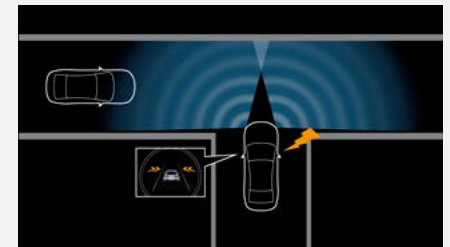
Automatically operates the accelerator and brake pedals to maintain a proper trailing distance between the your Mazda and the vehicle ahead. In addition, it assists with steering operations to keep the car in its proper lane. CTS contributes to reducing driver fatigue, supporting a safer, more reassuring and more comfortable driving experience.

(Available on certain grades on Mazda3, Mazda CX-30, Mazda CX-5, Mazda MX-30, Mazda CX-60 & Mazda CX-80)

FRONT CROSS TRAFFIC ALERT

Mazda's newly developed system detects other vehicles approaching from blind spots at the front right or left of the vehicle and alerts the driver of their presence. This helps prevent a common cause of accidents, when cars enter a T-junction with a partially obscured view.

(Available on certain grades on Mazda3, Mazda CX-30, Mazda MX-30, Mazda CX-60 & Mazda CX-80)

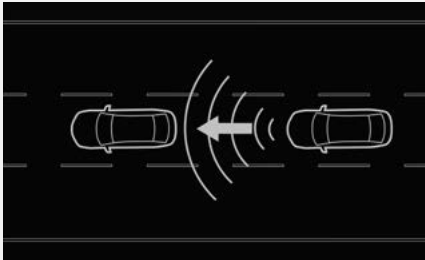


LANE DEPARTURE WARNING SYSTEM (LDWS) WITH LANE KEEP ASSIST SYSTEM

Designed to prevent your vehicle from inadvertently straying from its lane. A front view camera monitors the road ahead and calculates the cars position relative to the lane markings. If the system detects the vehicle is moving out of its lane unintentionally, the steering wheel will vibrate and an audible alert will sound. The system will also take corrective action to help you stay within the lanes through assisted steering.

(Available with differing features across the entire Mazda range)

Advanced Technology



MAZDA RADAR CRUISE CONTROL

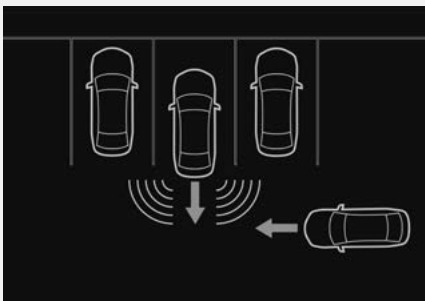
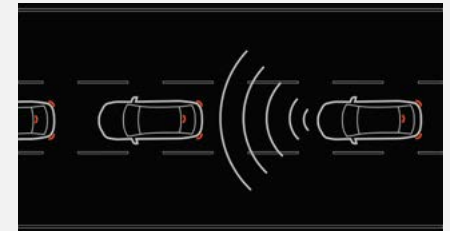
To activate, the driver sets a maximum speed (just as with cruise control) and size of the gap to maintain. The radar watches for traffic ahead and once the system senses a vehicle in front, the car will slow down and speed up automatically maintaining the drivers pre-set distance. Automatic models also have the additional feature of 'Stop & Go', meaning the vehicle will automatically accelerate and brake in start/stop traffic with minimal input from the driver.

(Not available on Mazda MX-5. Standard across the range on Mazda3, Mazda CX-30, Mazda CX-5, Mazda MX-30, Mazda CX-60 & Mazda CX-80)

SMART BRAKE SUPPORT – FRONT

Alerts the driver of a possible collision using the warning indications in the display and a warning sound if the front radar sensor and Forward Sensing Camera determine that there is the possibility of a collision with a vehicle ahead, pedestrian, or a bicycle. Furthermore, if a collision is unavoidable, the automatic brake control is performed to reduce damage in the event of a collision. In addition, when the driver depresses the brake pedal, the brakes are applied firmly and quickly to assist.

(Standard across the Mazda3, Mazda CX-30, Mazda MX-30, Mazda CX-60 & Mazda CX-80)



SMART BRAKE SUPPORT – REAR

Reduces damage in the event of a collision by operating the brake control when the system's sensors detect an obstruction at the rear.

SMART BRAKE SUPPORT – REAR CROSSING

Assists in avoiding accidents and reducing damage by applying the brakes if there is the possibility of collision with a vehicle approaching from the rear while you are reversing out of parking space.

(Available on certain grades across the Mazda3, Mazda CX-30, Mazda MX-30, Mazda CX-60 & Mazda CX-80)

i-ACTIV AWD

Whether you are on the motorway on a dark and rainy night or driving up a snowy country road, Mazda's all-wheel-drive system is designed to provide safety and comfort with fuel efficiency. Our engineers have developed i-ACTIV AWD to constantly monitor road conditions in real-time, watching for tiny variations in wheel speed that a driver would never notice. The system proactively controls the distribution of torque to all four wheels providing solid and predictable handling for all-road performance.

(Available on Mazda CX-30, Mazda CX-5, Mazda CX-60 & Mazda CX-80)



CRAFTED IN JAPAN

For further information on any of the Mazda Range, please visit www.mazda.co.uk or contact the Mazda Fleet Sales team:

email: info@mazda-fleet.co.uk

Phone: 03330 600 040

Mazda Motors UK reserves the right to introduce changes in specification and equipment due to its ongoing product development. Prices are subject to change without prior notice. Colour and trim samples shown in this digital brochure may vary from the actual colours because of the variations of resolutions and colours found in various screen displays, and if printed, limitations within the printing process. Models shown may not be to UK specification. It is recommended that you consult your Mazda dealer when referring to these. Apple CarPlay®, Android Auto™ and Bose are registered trademarks in the U.S. and other countries. Used with permission. Amazon, Alexa, and other related marks are trademarks of Amazon.com, Inc. or its affiliates. The Bluetooth® word mark and logos are owned by the Bluetooth SIG, Inc. and any use of such marks by Mazda Motor Company is under licence. Other trademarks and trade names are those of their respective owners.

Amazon Alexa is a cloud-based voice service provided by Amazon, which is provided under Amazon's own responsibility. To use Alexa, you need an Amazon account. Mazda only enables the use of Amazon Alexa in selected Mazda models and is not responsible for providing the Alexa services. Amazon's terms of use and privacy policy apply.

To use the Alexa functions in your Mazda vehicle, you must also register with Mazda Connected Services via the MyMazda app. For more information about Mazda Connected Services and the processing of data in this context, please refer to www.mazda.eu/en/mazda-in-europe. Alternatively, Alexa can be used by connecting the vehicle to a mobile WiFi hotspot. This may incur additional costs depending on your mobile phone tariff.

Amazon, Alexa, and other related marks are trademarks of Amazon.com, Inc. or its affiliates. Amazon Alexa is currently available in English, German, French, Italian, and Spanish. The Mazda Connect system language and home region setting must be set to a language and country supported by Amazon Alexa. In Europe these countries currently are the following: Germany, France, Ireland, Italy, Austria, Spain, United Kingdom.



Effective from 1 October 2025

